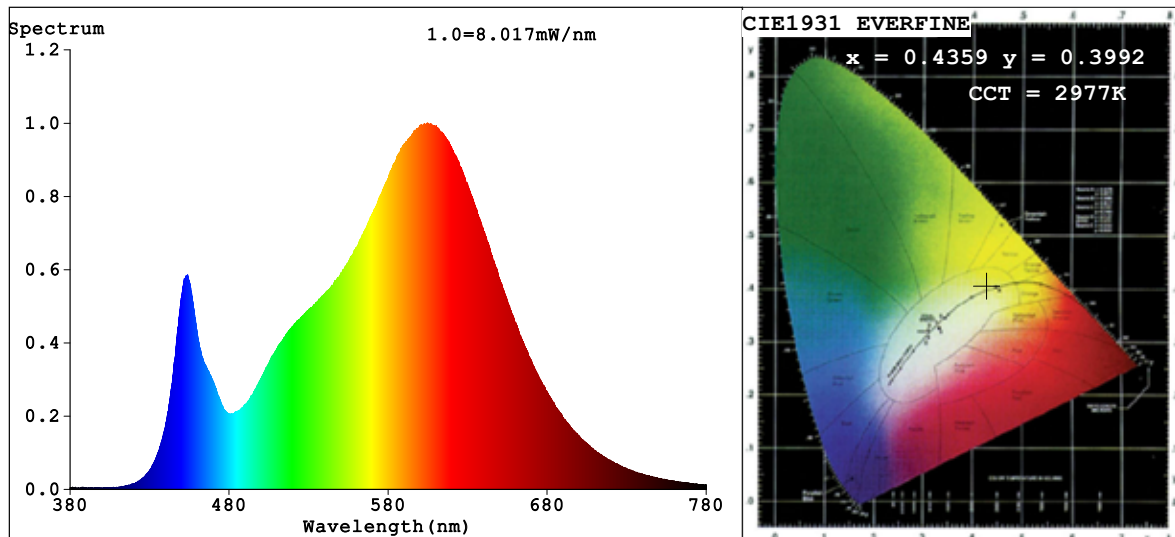


Spectrum Test Report



Color Parameters:

Chromaticity Coordinate: $x=0.4359$ $y=0.3992$ $u'=0.2520$ $v'=0.5193$
 CCT=2977K (Duv=-0.0018) Dominant WL: $\lambda_d = 583.6\text{nm}$ Purity=50.7%
 Ratio: R=23.3% G=73.9% B=2.7%; Peak WL: $\lambda_p = 604.9\text{nm}$ FWHM=123.4nm
 Render Index: Ra=83.1 CRI=78.1 TM30: Rf=82 Rg=96
 R1 =82 R2 =93 R3 =95 R4 =81 R5 =83 R6 =91 R7 =82
 R8 =59 R9 =9 R10=83 R11=80 R12=73 R13=85 R14=98 R15=75

Photo Parameters:

Flux = 384.5 lm Eff. : 88.28 lm/W $\Phi_e = 1.175\text{ W}$

Electrical parameters:

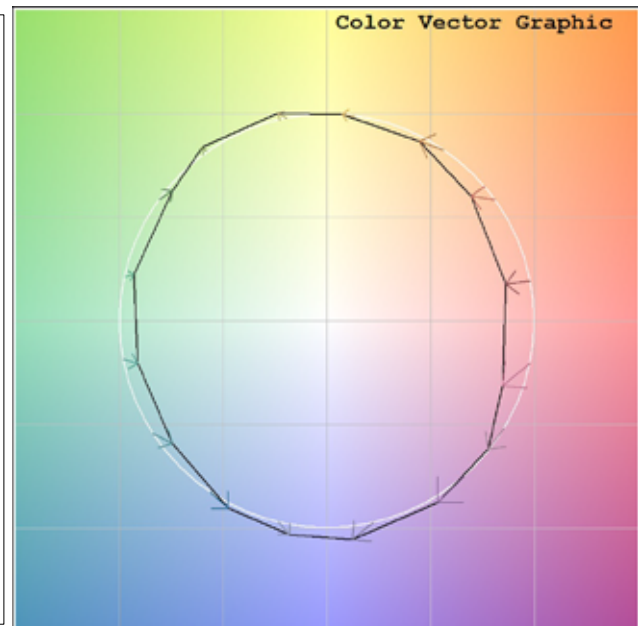
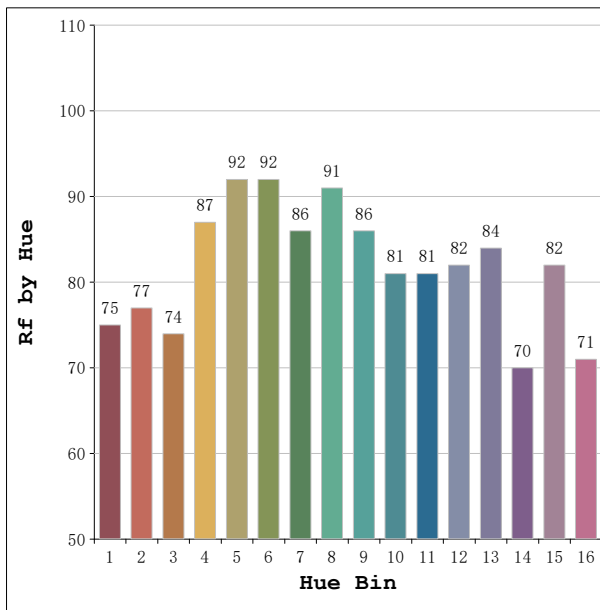
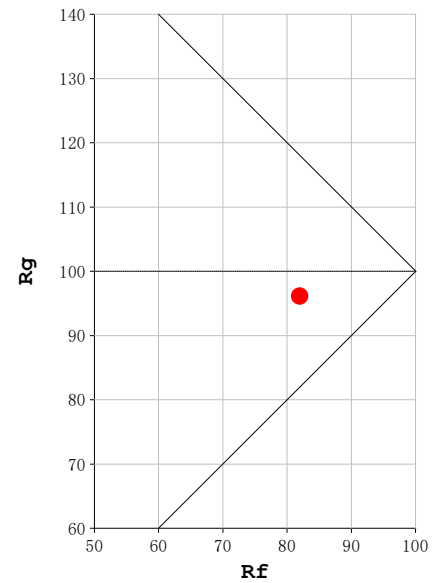
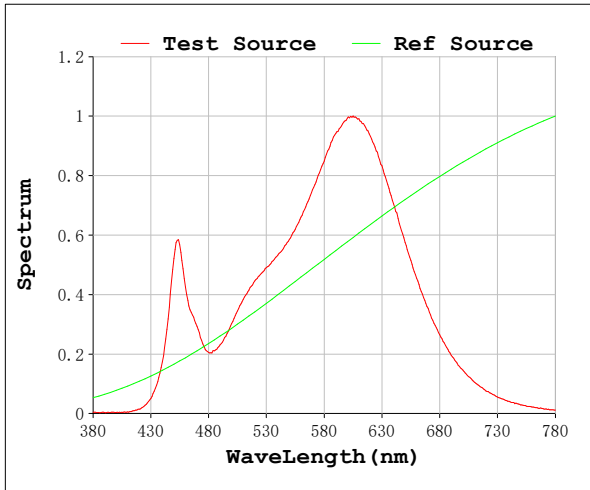
V = 11.998 V I = 0.3630 A P = 4.355 W PF = 1.000

Status: Integral T = 2000 ms $I_p = 33152$ (51%)

Model: Ecoled Zircon
 Tester: Sergio Carneros
 Temperature: 27Deg
 Manufacturer: Luz Negra S.L.

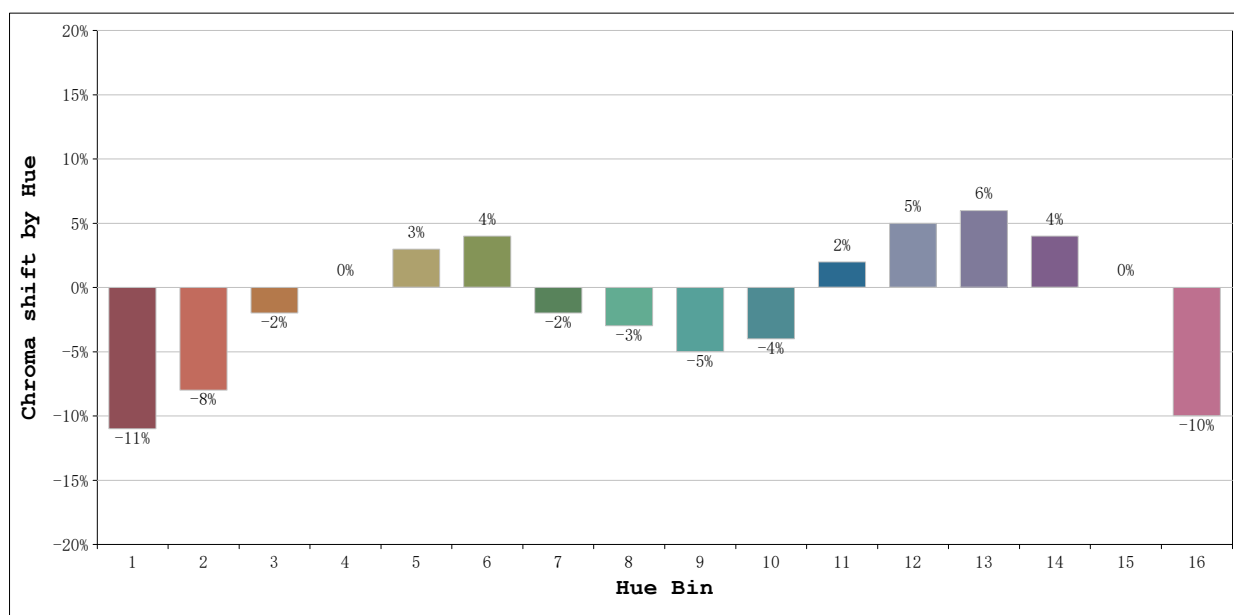
Number: 30.104
 Date: 01-06-2026
 Humidity: 35%
 Remarks: 100cm de tira flexible

Rf: 82 **CCT: 2977 K** **u': 0.2520**
Rg: 96 **Duv: -0.0018** **v': 0.5193**



Model:Ecoled Zircon
Tester:Sergio Carneros
Temperature:27Deg
Manufacturer:Luz Negra S.L.

Number: 30.104
Date:01-06-2026
Humidity:35%
Remarks:100cm de tira flexible



			Graphic shift(%)	
Hue Bin	Hue Angle	Rf	Chroma	Hue
1	0.0° - 22.5°	75	-11	1
2	22.5° - 45.0°	77	-8	8
3	45.0° - 67.5°	74	-2	12
4	67.5° - 90.0°	87	0	6
5	90.0° - 112.5°	92	3	4
6	112.5° - 135.0°	92	4	-1
7	135.0° - 157.5°	86	-2	-6
8	157.5° - 180.0°	91	-3	-1
9	180.0° - 202.5°	86	-5	3
10	202.5° - 225.0°	81	-4	9
11	225.0° - 247.5°	81	2	12
12	247.5° - 270.0°	82	5	6
13	270.0° - 292.5°	84	6	-10
14	292.5° - 315.0°	70	4	-17
15	315.0° - 337.5°	82	0	-11
16	337.5° - 360.0°	71	-10	-12

Model:Ecoled Zircon
Tester:Sergio Carneros
Temperature:27Deg
Manufacturer:Luz Negra S.L.

Number: 30.104
Date:01-06-2026
Humidity:35%
Remarks:100cm de tira flexible